



# HOT DOG EQUIPMENT

## GRILL-MAX ROLLER GRILLS

ANALOG & ELECTRONIC CONTROL OPTIONS

BUILT-IN BUN DRAWER OPTIONS

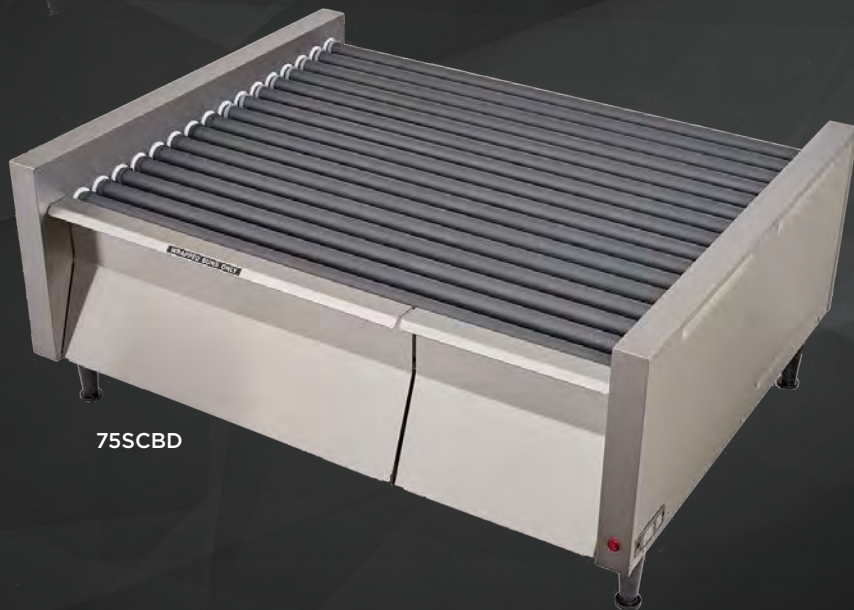
STALTEK, DURATEC & CHROME ROLLER OPTIONS

## BUN BOXES • SNEEZE GUARDS • ACCESSORIES

STAINLESS STEEL & CLEAR DOOR BUN BOX OPTIONS

1 OR 2-DOOR, SHEILD & GLASS CANOPY SNEEZE GUARD OPTIONS

DIVIDER KITS & MERCHANDISING DOORS



75SCBD

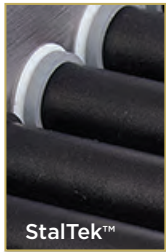


SS30BBC



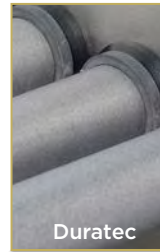
## ROLLER GRILL BUYING GUIDE

### ROLLER FINISH OPTIONS



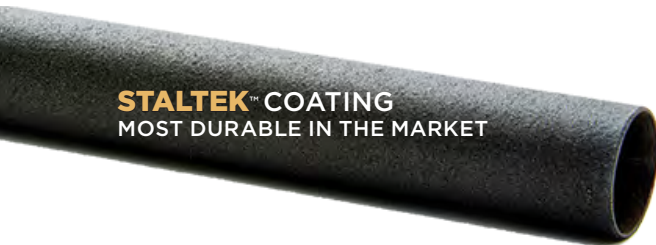
#### STALTEK™ COATING

- Most durable coating in the market
- Star exclusive innovative coating
- Unparalleled grip performance
- Coating rolls uneven product
- Withstands vigorous cleaning



#### DURATEC™ COATING

- Non-stick roller coating facilitates cleaning
- Finish designed to grip and turn consistently



### CONTROL OPTIONS

#### ANALOG VS. ELECTRONIC

##### ANALOG CONTROLS

Analog controls for front and rear temperature zones are durable and economical, but don't allow for fine temperature adjustments

##### ELECTRONIC PROGRAMMABLE CONTROLS

Electronic controls allow the roller grill to react to grill surface temps, resulting in consistent temperatures and better quality products.

Program individual product cook/hold times & temps, taking the guesswork out of preparing menu items



ANALOG



ELECTRONIC

### BUN DRAWERS

#### BUILT-IN VS. STAND ALONE

##### BUILT-IN BUN DRAWER

Eliminates the need for a separate piece of equipment, but has limited capacity as to storage

##### STAND ALONE BUN DRAWER

May be heated or unheated, depending on the bread and if buns are individually wrapped Can be stacked beneath a roller grill, which increases height. Can be built-in to cabinets, or drop surfaces

### ROLLER GRILLS FEATURE STADIUM SEATING

Stadium seating slanted roller design provide a 3° to 5° slope for the best presentation of your products increasing sales and impulse purchases

Flat roller grills available! Used for double-sided or employee serving, and can be recessed below the counter. Contact factory for details and pricing





## ROLLER GRILL BUYING GUIDE

### ROLLER GRILL SPECS

Series No.	Width [in.]	Depth [in.]	Height [in.]	Ship Wt. [lb.]	Bun Drawer Ship Wt. [lb.]
20	17.13	20.63	12.50	44	-
30	23.75	20.63	12.50	53	63
45	23.75	28.50	12.50	69	80
50	35.75	20.63	12.50	69	80
75	35.75	28.50	15.50	108	120

### Series No. & Roller Grill Capacity

#### SERIES NO. & ROLLER GRILL CAPACITY

Series No.	Capacity* Hot Dogs	Description
20	20 hot dogs	Ideal for low-volume locations, small to no product variation and small footprint areas. 11 rollers per grill
30	30 hot dogs	Popular size. 11 rollers per grill
45	45 hot dogs	Great for deeper countertops with limited left-to-right space. 16 rollers per grill
50	50 hot dogs	Most popular size. 11 rollers per grill
75	75 hot dogs	Lots of room for high-volume locations. 16 rollers per grill

#### INDUSTRY INNOVATION LEADERS

UNITED STATES PATENT NUMBERS

6,393,971 | 6,782,802 | 7,520,211

6,659,574 7,367,261 | 7,334,517

6,707,015 and counting!



# ROLL

A **WIDE RANGE**  
OF **PRODUCTS**

WITH **GRILL-MAX**



# ROLLER GRILLS / HOT DOG EQUIPMENT



## GRILL-MAX ROLLER GRILLS



### ⚡ STAR GRILL-MAX ROLLER GRILLS

Series No.	Capacity Hot Dogs	ANALOG Controls		ELECTRONIC Controls		Volts <sup>1</sup>	Watts	NEMA Plug
		Type: SC Duratec	Type: ST StalTek	Type: SCE Duratec	Type: STE StalTek			
20	20 dogs		-	-	-	120	930	5-15P
30	30 dogs					120	1150	5-15P
45	45 dogs				-	120 120 (CSA)** 230* *45SC & 45SCE	1650 1700 (CSA) 1650	5-15P 5-20P (CSA) CEE7/7
50	50 dogs					120 120 (CSA)**	1535 1535 (CSA)	5-15P 5-20P (CSA)
75	75 dogs					120 120 (CSA)**	1730 1730 (CSA)	5-15P 5-20P (CSA)
1 - * 230v Service available for upcharge								
				** 120V (CSA) Canadian Service available for models - 45SCE, 50SCE, 50STE, 75SCE				

**ROLL**  
A **WIDE RANGE**  
OF **PRODUCTS**  
WITH **GRILL MAX**

75STBD with  
SNEEZE  
GUARD





# ROLLER GRILLS / HOT DOG EQUIPMENT



## GRILL-MAX ROLLER GRILLS with BUILT-IN BUN DRAWER



75SCBD

### STAR GRILL-MAX ROLLER GRILLS with BUILT-IN BUN DRAWER

Series No.	Capacity Hot Dogs	ANALOG Controls		ELECTRONIC Controls		Volts <sup>1</sup>	Watts	NEMA Plug
		Type: SCBD Duratec	Type: STBD StalTek	Type: SCBDE Duratec	Type: STBDE StalTek			
30	30 dogs 32 buns					120	1150	5-15P
45	45 dogs 32 buns				\$10,688	120	1650	5-15P
50	50 dogs 48 buns					120 120 (CSA)* 208/240**	1535 1535 (CSA) 1250/1670	5-15P 5-20P (CSA) 6-15P
75	75 dogs 48 buns					120 208/240**	1730 1810/2400	5-15P 6-20P
* 120V (CSA) Canadian Service available for models - 50STBD, 50STBDE								
** 208/240V Service available for models - 50STBD, 50STBDE, 75STBD, 75SCBDE, 75STBD								





# ROLLER GRILLS / HOT DOG EQUIPMENT



## BUN BOXES, SNEEZE GUARDS & ROLLER GRILL ACCESSORIES



SS50BBC  
UNHEATED  
CLEAR BUN DOOR



### STAR GRILL-MAX

Model No.	Bun Box STAINLESS STEEL	Description	Width [in.]	Depth [in.]	Height [in.]	Ship Wt. [lb.]	Freight Class
SS50BB		Series 50 & 75 (Capacity: 64 buns)	35.75	20.60	6.90	49	100

SIGN HOLDER 50SH

GLASS CANOPY  
SNEEZE GUARD  
50SG-G



30SG-1D



30SGS

### STAR SNEEZE GUARDS

Series No.	Type: SG-1D Single Door Polycarbonate	Type: SG-2D Double Door Polycarbonate	Type: SGS Shield' Polycarbonate	Ship Wt. [lb.]	Type: SG-G Glass Canopy	Type: SH Sign Holder <sup>2</sup>	Ship Wt. [lb.]	Freight Class
20		-	-	7	-	-	-	100
30				9		-	32	100
45		-		13			45	100
50				17				100
75				18				100

1 - Optional shield to convert sneeze guard doors into a pass-thru sneeze guard  
2 - Optional sign holder for Glass Canopy sneeze guards



#### GLASS SNEEZE GUARDS

Open concept is modern looking and easy to clean

#### PLEXI-GLASS POLYCARBONATE SNEEZE GUARDS

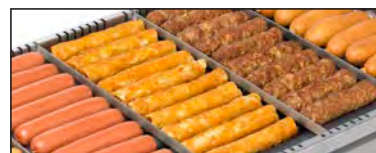
Enclosed design keeps 10-15°F higher temps

### MERCHANDISING DOORS & MISC. ROLLER GRILL ACCESSORIES

Model No.	Description	Ship Wt. [lb.]	Freight Class
<b>MERCHANDISING DOORS</b>			
20RGMD	Series 20 doors	5	100
30RGMD	Series 30 & 45 doors	5	100
50RGMD	Series 50 & 75 doors	7	100
<b>OTHER ACCESSORIES</b>			
RGLK	4" Adjustable Legs	2	100
THU	Tong Holder	1	100

### DIVIDER KITS

Model No.	hville, TN	Description	Ship Wt. [lb.]	Freight Class
30RGDKC		Series 30	2	100
45RGDKC		Series 45	4	100
50RGDKC		Series 50	6	100
75RGDKC		Series 75	8	100



DIVIDER KIT  
30RGDKC